



Lot 2119 Scandinavian Circuit, Rouse Hill

\$1,368,810



Woodlands Facade

INCLUSIONS

- Upgraded 2.59m ceiling heights to the ground floor
- Bulkhead to kitchen cabinetry, with cabinetry above the fridge space.
- Fully Ducted Premium Actron Air Conditioning
- Glazed Porcelain tiling throughout the entry, Hallways, Kitchen, Family and Dining
- Premium Carpet Range to Balance of the home
- Concrete Driveway included to all dwelling
- Tiled Porch and Alfresco's with Roof Above
- Fixed Site costs included to package price.
- 20mm Dekton Stone Benchtops to Laundry, Kitchen and Vanity Units
- Upgrade Matt Black Tapware throughout dwelling

For more information - reach out to one of our friendly consultants:

Samee Tashkeel 0426 004 884
Ryan Kolina 0449 177 217

House Size:	241.7m ²
Land Size:	270m ²
House Price:	\$540,910
Land Price:	\$827,900

ABOUT 'Ruby 25MK3'

Introducing the Ruby – a stylish double-storey home with open-plan living, and seamless alfresco flow. Enjoy a private theatre, study nook, and practical laundry downstairs. Upstairs features three bedrooms, a luxe master suite, and sitting area – where function meets flair.



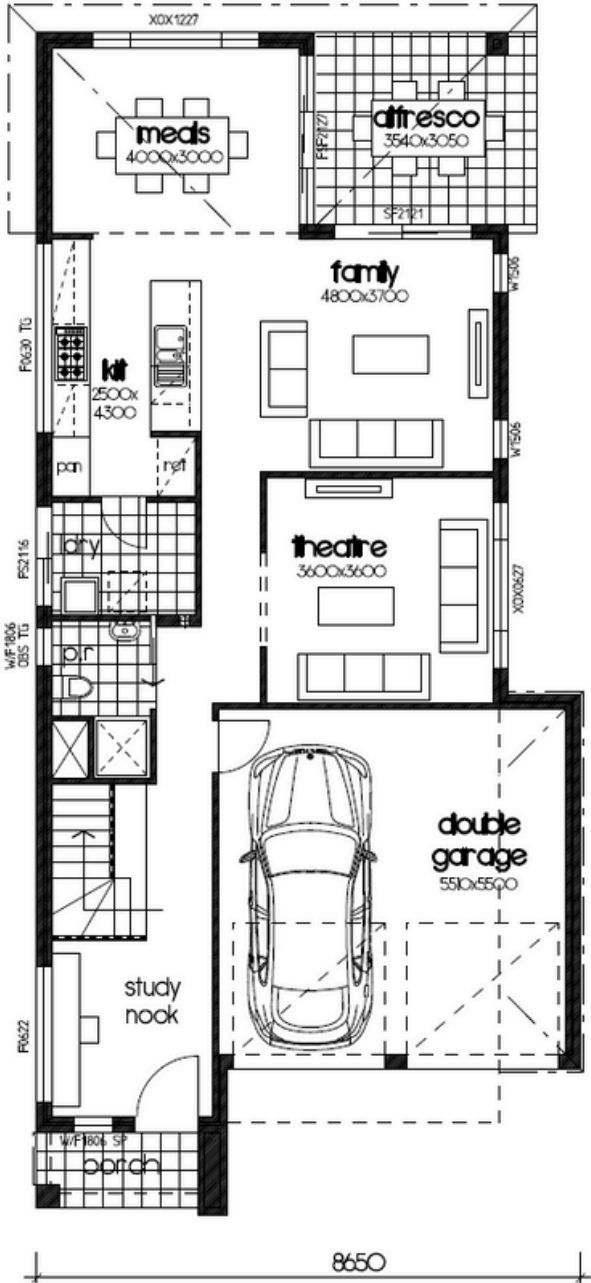
SAPPHIRE LAND ESTATE - ROUSE HILL

1800 785 558

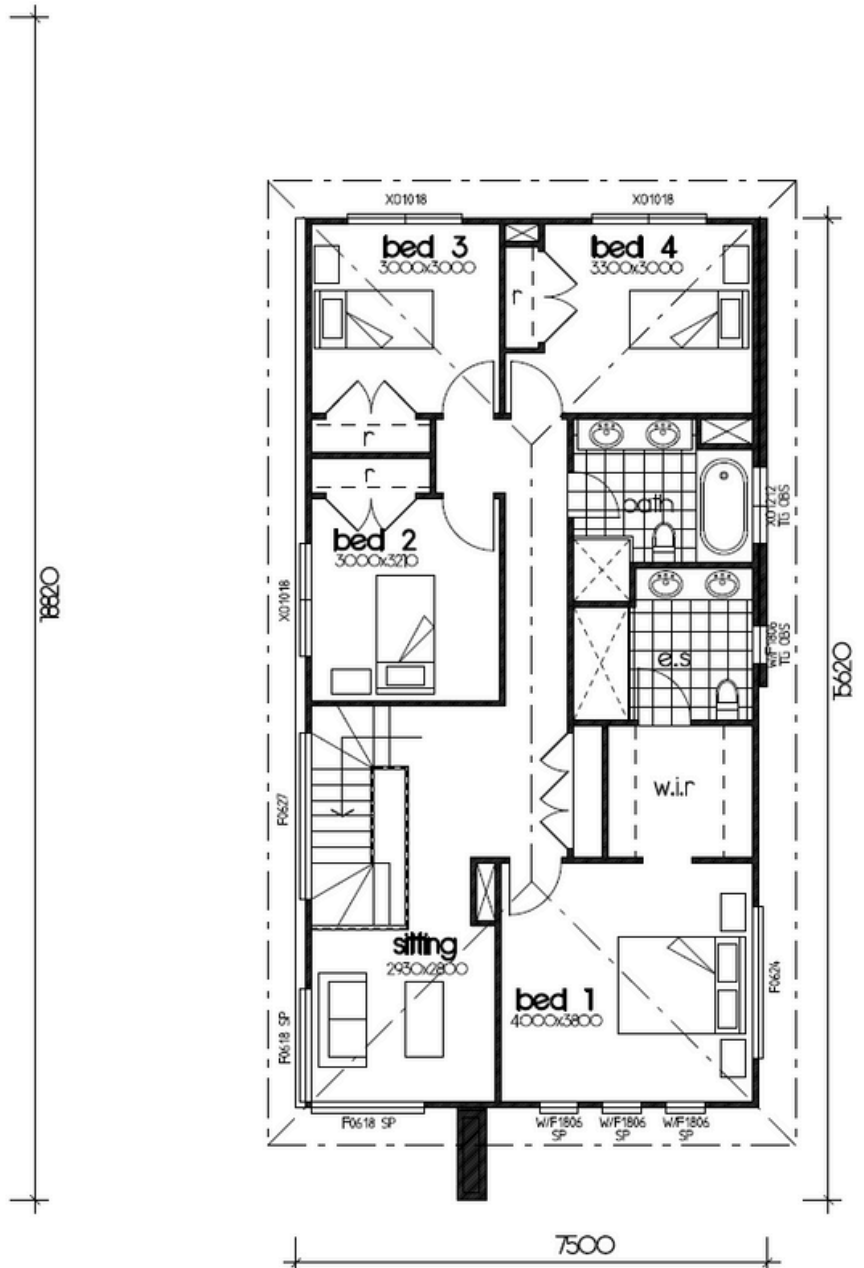
sapphirerousehill.com.au

ADG | AVANTAUS
DEVELOPMENT
GROUP

Floor Plan



GROUND FLOOR PLAN



FIRST FLOOR PLAN